

Tuba Ditty

BBb/C Tuba



4



7



10



13



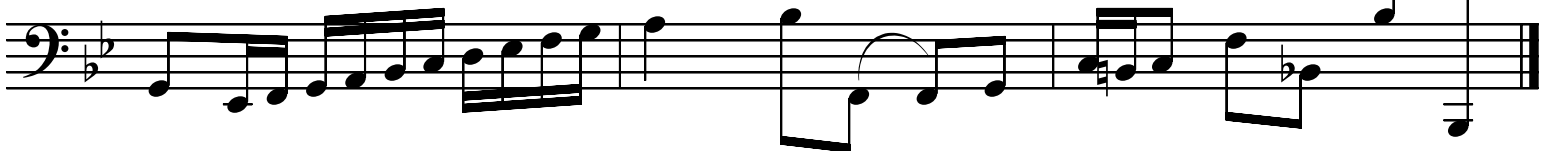
16



19



22



Tuba Ditty

F Tuba

Measures 1-3 of the musical score. The first measure contains a quarter note G2, a quarter note A2, and a quarter note B2. The second measure contains a quarter note C3, a quarter note D3, and a quarter note E3. The third measure contains a quarter note F3, a quarter note G3, and a quarter note A3. A slur is placed over the notes in measures 2 and 3.

4

Measures 4-6 of the musical score. Measure 4: quarter note B2, quarter note C3, quarter note D3. Measure 5: quarter note E3, quarter note F3, quarter note G3. Measure 6: quarter note A3, quarter note B3, quarter note C4. A slur is placed over the notes in measures 5 and 6.

7

Measures 7-9 of the musical score. Measure 7: quarter note D4, quarter note E4, quarter note F4. Measure 8: quarter note G4, quarter note A4, quarter note B4. Measure 9: quarter note C5, quarter note B4, quarter note A4. A slur is placed over the notes in measures 8 and 9.

10

Measures 10-12 of the musical score. Measure 10: quarter note G3, quarter note A3, quarter note B3. Measure 11: quarter note C4, quarter note D4, quarter note E4. Measure 12: quarter note F4, quarter note G4, quarter note A4. A slur is placed over the notes in measures 11 and 12.

13

Measures 13-15 of the musical score. Measure 13: quarter note B3, quarter note C4, quarter note D4. Measure 14: quarter note E4, quarter note F4, quarter note G4. Measure 15: quarter note A4, quarter note B4, quarter note C5. A slur is placed over the notes in measures 14 and 15.

16

Measures 16-18 of the musical score. Measure 16: quarter note D4, quarter note E4, quarter note F4. Measure 17: quarter note G4, quarter note A4, quarter note B4. Measure 18: quarter note C5, quarter note B4, quarter note A4. A slur is placed over the notes in measures 17 and 18.

19

Measures 19-21 of the musical score. Measure 19: quarter note G3, quarter note A3, quarter note B3. Measure 20: quarter note C4, quarter note D4, quarter note E4. Measure 21: quarter note F4, quarter note G4, quarter note A4. A slur is placed over the notes in measures 20 and 21.

22

Measures 22-24 of the musical score. Measure 22: quarter note B3, quarter note C4, quarter note D4. Measure 23: quarter note E4, quarter note F4, quarter note G4. Measure 24: quarter note A4, quarter note B4, quarter note C5. A slur is placed over the notes in measures 23 and 24.